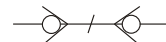


## LSQ-FFH 平面式液压快速接头(碳钢)(新)

LSQ-FFH FLAT FACE TYPE HYDRAULIC QUICK COUPLING(STEEL)(NEW)



两端开闭式

Socket with valve Plug with valve



### 特征

- 新型阀的设计，能抵抗高速流体与脉冲压力的冲击，提供更高的性能
- 套筒锁紧机构通过连接后旋转套筒而啮合，在使用期间沿地面拖动接头时，套锁机构能防止意外断开。
- 套锁机构的设计有助于防止杂物进入内部机构从而在连接或断开时引起误操作，套筒覆盖挡圈并且在弹簧区域包含了防尘密封件。
- 淬火处理的公插头和套筒以及实心棒状结构造就优质阴接头，能最大限度的抵抗由于液压和机械冲击所造成的剥蚀及损坏。
- 这种抗爆裂 BFT 密封圈设计用于防止在危险工作状况下出现爆裂或损坏。
- 耐用球锁机械保证每次都能可靠连接，数个锁定钢球均匀分配工作负载，同时提供对准及旋转动作从而减小软管扭曲延长软管使用期，警告：这类产品不能用作旋转阳接头，在压力下旋转会导致过度和过早磨损。
- LSQ-FFH 系列接头在连接及断开时使用平齐阀机构操作，这意味着阀之间的接合能使断开时只损失少量流体，或在重新连接时只混入少量空气。
- 采用新工艺环保镀锌合金，提供更高的防锈性能  
LSQ-FFH 接头符合 ISO16028 标准。
- 并与下列产品互换：美国派克 (PARKER) FEM 系列、意大利意图奇 (STUCCHI) FIRG 系列、美国爱力克 (AEROQUIP) FD89 系列、美国汉森 (HANSEN) FF 系列。

### Features

- New valve design, it can resistance damage from high flow and the pressure of impulse that providing advanced performance.
- Sleeve locking mechanism is engaged by rotating sleeve after connection. It prevents accidental disconnection when the coupling is dragged along the ground.
- Sleeve mechanism and designed to prevent dirt from high flow entering the internal mechanism and thus causing faulty operation when connecting or disconnecting. The sleeve covers the retaining ring and also incorporates a dust seal in the spring area.
- Steel construction, zinc plated finished and hardened nipples and sleeves and solid barstock construction for maximum resistance to damage from hydraulic and mechanical shock.
- This Anti -Blowout Nitrile/PTFE bonded seal is designed to prevent blow-out or damage during severe service conditions.
- Durable ball-locking mechanism assures reliable connections every time. A large number of locking balls distributes the work load evenly while providing alignment and swiveling action to reduce hose torque and prolong hose life.
- LSQ-FFH Series couplings employ flush valving when connecting or disconnecting. This means that the valves are mated together so that only small amounts of fluid can be lost during disconnection or air inclusion during reconnection.
- New Zinc nickle plating treatment provides advanced anti-rust performance.
- LSQ-FFH series conforms to standard of ISO16028.
- Compatible with PARKER FEM Series, STUCCHI FIRG Series, AEROQUIP FD89 Series and HANSEN FF Series.

### 应用

松乔 LSQ-FFH 系列接头广泛用于以下公用设施：液压油泄漏会构成严重的安全险情，尤其对用于高压电源输送线维护的架空斗式起重机，这类接头还用建筑、铁路维护及矿业中的液压机具之快速切换，易于清理使之能理想地用于这类特殊环境。

Songqiao LSQ-FFH Series couplings are widely used in the public utility market where hydraulic oil spillage can constitute a serious safety hazard, particularly in overhead bucket hoists that are used for maintenance of high-voltage power transmission lines. These couplings are also used for quick change of hydraulic Tools in construction, railway maintenance and mining industries. The ease of cleaning makes them ideal for use in these types of hostile environments.

### 技术规范

规格 (英寸)	1/4 (02)	3/8 (03)	1/2 (04)	5/8 (06)	3/4 (08)	1 (10)
额定压力 (PSI)	5000	5000	5000	5000	5000	3770
额定流量 (GPM)	3	12	12	20	28	50
温度范围 (标准密封圈)	-20°C 至 +120°C					
标准密封圈材料为丁腈橡胶	NBR					

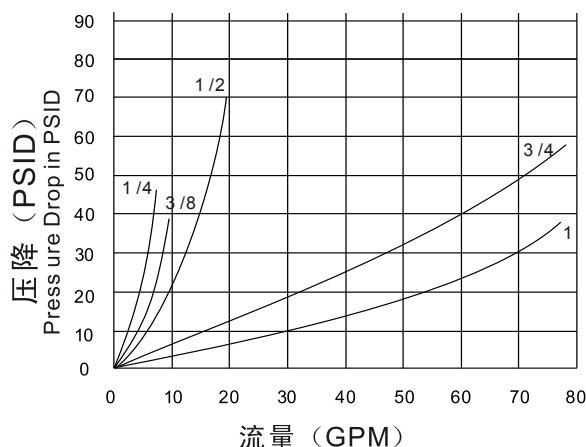
### Specifications

Body Size(in)	1/4 (02)	3/8 (03)	1/2 (04)	5/8 (06)	3/4 (08)	1 (10)
Rated Pressure(PSI)	5000	5000	5000	5000	5000	3770
Rated Flow(GPM)	3	6	12	20	28	50
Temperature Range(std seals)	-20°C to +120°C					
Standard seal material NBR						

### Performance 性能

测试流体：油-200SUS

Test Fluid: Oil-200SUS



1 GPM=3.75 L/Min      1 PSID=0.0069 MPa

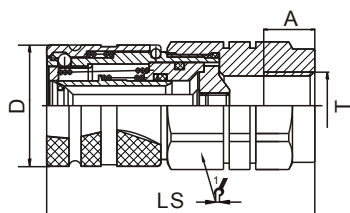
# LSQ-FFH 平面式液压快速接头(碳钢)(新)

LSQ-FFH FLAT FACE TYPE HYDRAULIC QUICK COUPLING(STEEL)(NEW)

两端开闭式

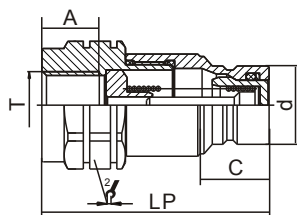
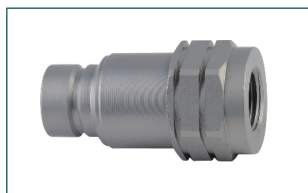
Socket with valve Plug with valve

## 母插座 Socket



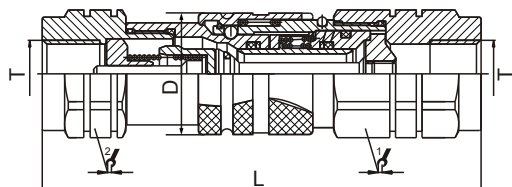
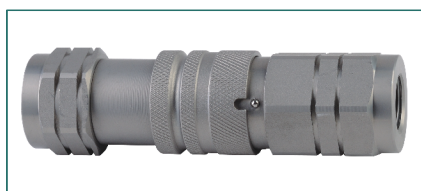
ISO	PART NO.	LS	D	∠	A	T
6.3	LSQ-FFH-02SF	54.5	φ28	S27六角	13	G1/4 NPT1/4
10	LSQ-FFH-03SF	69	φ32	S30六角	14	G3/8 NPT3/8
10	LSQ-FFH-03SF	74	φ32	S30六角	17	G1/2 NPT1/2
12.5	LSQ-FFH-04SF	84	φ38	S36六角	18	G1/2 NPT1/2
12.5	LSQ-FFH-04SF	84	φ38	S36六角	19	G3/4 NPT3/4
16	LSQ-FFH-06SF	83.5	φ42	S41六角	18	G3/4 NPT3/4
19	LSQ-FFH-08SF	99	φ48	S46六角	22	G3/4 NPT3/4
19	LSQ-FFH-08SF	99	φ48	S46六角	22.5	G1 NPT1
25	LSQ-FFH-10SF	108.5	φ55	S55六角	22	G1 NPT1
25	LSQ-FFH-10SF	111.5	φ55	S55六角	23	G1-1/4 NPT1-1/4

## 公插头 Plug



ISO	PART NO.	LP	C	d	∠	A	T
6.3	LSQ-FFH-02SF	54	18	φ16.1	S22六角	14	G1/4 NPT1/4
10	LSQ-FFH-03SF	60	19.5	φ19.7	S27六角	14	G3/8 NPT3/8
10	LSQ-FFH-03SF	63	19.5	φ19.7	S27六角	16	G1/2 NPT1/2
12.5	LSQ-FFH-04SF	71	21.6	φ24.5	S36六角	18	G1/2 NPT1/2
12.5	LSQ-FFH-04SF	71	21.6	φ24.5	S36六角	18	G3/4 NPT3/4
16	LSQ-FFH-06SF	73	21.6	φ27	S36六角	18	G3/4 NPT3/4
19	LSQ-FFH-08SF	84	29	φ30	S46六角	22	G3/4 NPT3/4
19	LSQ-FFH-08SF	84	29	φ30	S46六角	23	G1 NPT1
25	LSQ-FFH-10SF	97	32	φ36	S55六角	22	G1 NPT1
25	LSQ-FFH-10SF	90	32	φ36	S55六角	23	G1-1/4 NPT1-1/4

## 连接器装配 Coupling Fitting



ISO	PART NO.	L	D	∠	∠	T
6.3	LSQ-FFH-02	97	φ28	S27六角	S22六角	G1/4 NPT1/4
10	LSQ-FFH-03	113	φ32	S30六角	S27六角	G3/8 NPT3/8
10	LSQ-FFH-03	121	φ32	S30六角	S27六角	G1/2 NPT1/2
12.5	LSQ-FFH-04	137.5	φ38	S36六角	S36六角	G1/2 NPT1/2
12.5	LSQ-FFH-04	137.5	φ38	S36六角	S36六角	G3/4 NPT3/4
16	LSQ-FFH-06	139	φ42	S41六角	S36六角	G3/4 NPT3/4
19	LSQ-FFH-08	161.5	φ48	S46六角	S46六角	G3/4 NPT3/4
19	LSQ-FFH-08	161.5	φ48	S46六角	S46六角	G1 NPT1
25	LSQ-FFH-10	182	φ55	S55六角	S55六角	G1 NPT1
25	LSQ-FFH-10	178	φ55	S55六角	S55六角	G1-1/4 NPT1-1/4